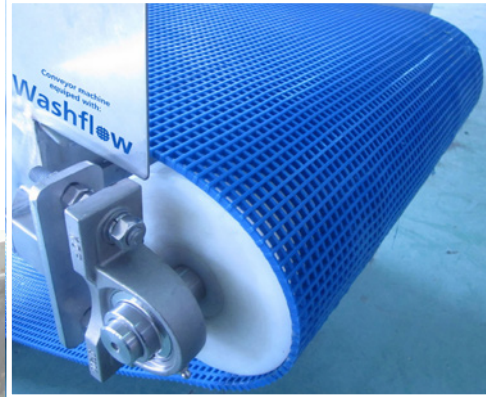


esbelt.com



Washflow® belts in the Shellfish industry

A new concept in belts for the washing
and conveyance of shellfish.

The light, flexible design of the **Washflow®** belt, makes it the best option for washing and conveying shellfish, where stainless steel mesh or modular belts are traditionally used. The washflow belts offers a longer working life and facilitates cleaning and maintenance tasks.

High performance Polyurethane

Tested successfully in Cancale, Bretagne

Excellent resistance to:

- ABRASION
- HYDROLYSYS
- OUTDOOR Conditions

EU 10/2011 Food quality

General advantages:

Lightweight (low electricity consumption).

Flexible (permits small flexing and back-flexing diameter pulleys) even at low temperatures.

No noise

Low maintenance

Good performance with oils and acids.

Easy to clean (less water consumption)

Different grid sizes:
6 x 6 mm / 12 x 12 mm adapting to different granulometries of solids or water flows.

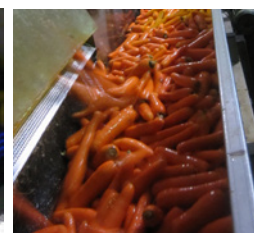


Other applications:

- Conveyance, washing and rinsing of vegetables, olives, fruit, fish and more....
- Production of prepared foods (e.g. salads).
- Desalting meats.
- Grey water treatment in industry in general.
-In summary, all applications which require continuous conveyance, rinsing or draining.

Other sectors:

- Olive
- Canned vegetables
- Fish
- Vegetable processing
- Meat industry





competitors' stainless mesh belt



esbelt WASHFLOW belt

Dirt, soil and stones that have to be separated from the product get stuck in the holes in modular belts.



Modular belt.

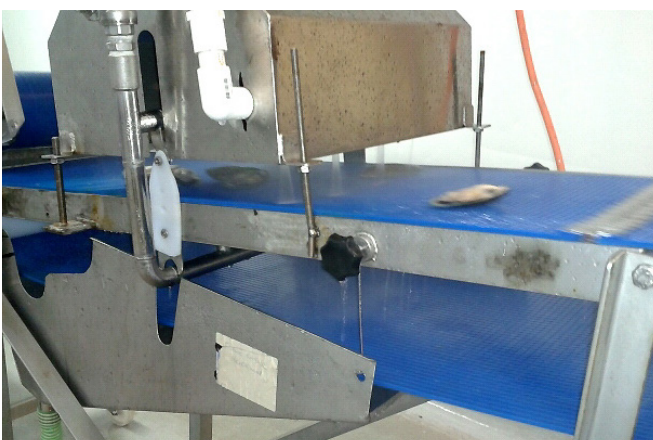
Advantages of **Washflow®** compared to the competitors' stainless steel mesh belts.

- **A SINGLE 100% HOMOGENOUS ELEMENT (MONOBLOCK).**
No elements susceptible to detachment or breakage.
- **IT DOES NOT GET STUCK** due to encrusted **BROKEN SHELLS** or **FOREIGN BODIES**.
- The **DIFFERENT GRID SIZES (6x6 or 12x12)**, **FACILITATE DRAINAGE** in the washing process.
- Their **PRICE**.



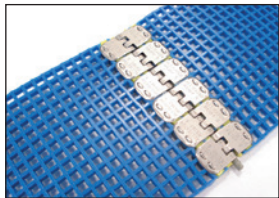
Benefits of **Washflow®** for the user:

- **LONGER LASTING THAN MODULAR AND MESH BELTS.** Designed without joints (pins) or added lateral reinforcement, which can come loose and deteriorate.
- **CLEANING AND MAINTENANCE.** Its simple, uniform structure permits fast, simple and effective cleaning.
- **EASY TO REPLACE.** Smooth traditional belts can be replaced with **Washflow®** without change to the conveyor.
- **REDUCED MAINTENANCE COSTS.** Very light, flexible and tear-resistant PU belt with internal reinforcement, resulting in very few breaks, faults and unexpected stoppages. It does not damage the conveyor structure due to abrasion/wear, unlike heavier, more rigid modular belts. Easy belt centring and guiding.

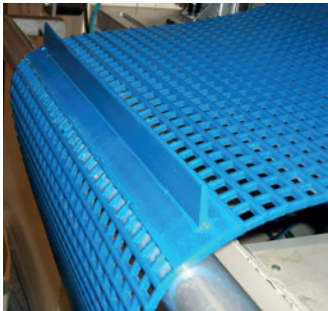


Technical data sheet

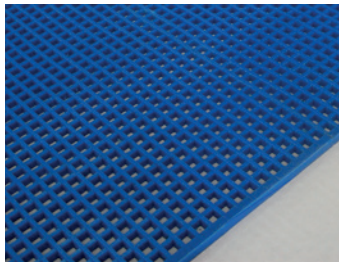
Type	Material	Hardness °ShA	Colour	Grid size mm	Constant (intermittent) temperature °C	Belt thickness mm	Belt weight kg/m ²	Friction coefficient						Min. diameter (with solid transition zone) mm	Min. diameter (without solid transi- tion zone) mm	Working load at 1% elong. N/mm	Working load at 1.2% elong. N/mm	Breaking load belt N/mm	Max. roll width mm
								Wood		Steel		Plastic							
								SK	DK	SK	DK	SK	DK						
WFU06A06	PU	85	Blue 06	6 x 6	-25 (-30) +60 (70)	5,80	3,30	0,50	0,53	0,33	0,29	0,42	0,44	250	60	10	13	30	1450
WFU12A06	PU	85	Blue 06	12 x 12	-25 (-30) +60 (70)	7,45	3,90	0,62	0,64	0,51	0,42	0,61	0,57	350	80	25	31	63	1450



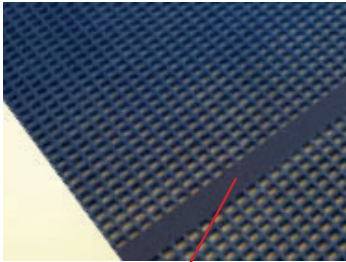
Stainless steel fasteners.



PU Profiles
can be attached.



Joint without fully covered
transverse zone (flexible joint,
almost invisible)



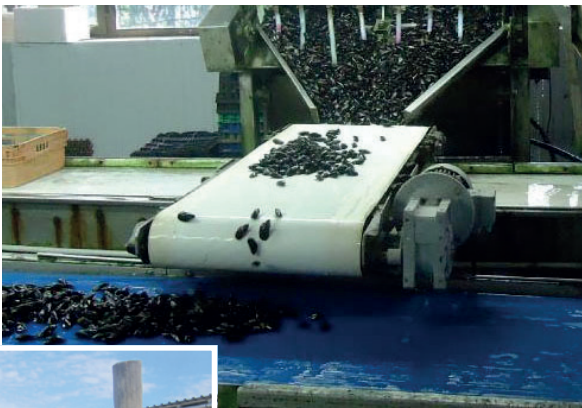
Joint with fully covered transverse zone:
Washflow 6x6: approx every 7m, solid transition zone, with 5 unperforated rows (50mm max.).
Washflow 12x12: approx every 2.5 m, solid transition zone, with 3 unperforated rows (55mm max.).

Other esbelt products in the shellfish industry

ASTER 36X1C

NOVAK and CLINA (CK)

BREDA 20CK (with reinforced profiles) for the classification process.



May 2017



Esbelt Group companies:

Esbelt, S.A.

Provença, 385
08025 Barcelona
Spain
Te. +34-93 207 33 11
Fax + 34-93 207 13 63
www.esbelt.com
spain@esbelt.com

Esbelt GmbH

Habichtweg 2
41468 Neuss
Germany
Tel. +49-2131 9203-0
Fax +49-2131 9203-33
www.esbelt.de
info@esbelt.de

Esbelt SAS

Parc d'activités de Taure
31880 La Salvétat St-Gilles
France
Tel. +33-5 61 06 89 10
Fax +33-5 61 06 89 11
www.esbelt.fr
esbelt@esbelt.fr

Esbelt Trading Inc.

7 Winter Forest Court
O'Fallon, MO 63366
USA
Tel. +1-636 294 2267
Fax +1-636 294 2268
www.esbelt.us
esbelt@esbelt.us

Esbelt ApS

Agerhatten 16B - Indgang 2
DK-5220 Odense SØ
Denmark
Tel. +45 70 20 62 09
Fax +45 66 12 62 09
www.esbelt.dk
esbelt@esbelt.dk